



Essex County College
**BOARD OF
SCHOOL
ESTIMATE**



October 15, 2021 9:30 AM

ESSEX COUNTY COLLEGE
BOARD OF SCHOOL ESTIMATE MEETING

A Virtual Meeting

Thursday, October 15, 2021 • 9:30 AM

Please click the link below to join the webinar:

<https://essex-edu.zoom.us/j/95517947786>

Or One tap mobile :

US: +13126266799,,95517947786# or +16465588656,,95517947786#

Or Telephone:

Dial (for higher quality, dial a number based on your current location):

US: +1 312 626 6799 or +1 646 558 8656 or +1 301 715 8592 or +1 346 248 7799
or +1 669 900 9128 or +1 253 215 8782

Webinar ID: 955 1794 7786

International numbers available: <https://essex-edu.zoom.us/u/aeFTMlphIo>

AGENDA

Call to Order The Honorable Joseph N. DiVincenzo
County Executive, Essex County, NJ

Roll Call

Comments Dr. Augustine Boakye
Interim President, Essex County College

Dr. Marion A. Bolden
Chair, Essex County College Board of Trustees

Mr. Joseph S. Zarra
Treasurer, Essex County College Board of Trustees

The Honorable Rufus I. Johnson
Commissioner, Essex County Board of County Commissioners

The Honorable Leonard M. Luciano
Commissioner, Essex County Board of County Commissioners

The Honorable Joseph N. DiVincenzo

Roll Call Vote on Resolution:

Acceptance of Additional Capital Funds from the County of Essex

Public Comments

Adjournment

**RESOLUTION OF THE BOARD OF SCHOOL ESTIMATE OF
ESSEX COUNTY COLLEGE
FIXING AND DETERMINING THE AMOUNT OF MONEY NECESSARY FOR
SUPPLEMENTAL CAPITAL EXPENSES**

WHEREAS: On September 21, 2021 the Board of Trustees of Essex County College requested additional capital funding from the County of Essex in the amount of \$10,000,000 for capital expenses associated with the construction of a new branch campus building in West Caldwell, New Jersey and is hereto attached as Exhibit A; AND

WHEREAS: The Board of Trustees of Essex County College in accordance with the provisions of N.J.S.A. 18A:64A-17 did fix a date, place, and time for the holding of a public hearing by the Board of School Estimate with respect to the acceptance of said funding and is hereto attached as Exhibit B; AND

WHEREAS: Adequate notice of this public meeting has been duly established in accordance with the provisions of N.J.S.A. 10:4-6 *et. Seq.* and a copy of said publication are attached hereto as Exhibit C; NOW THEREFORE BE IT

WHEREAS: The Board of Trustees of Essex County College in accordance with the provisions of N.J.S.A. 18A:64A-19 has prepared and delivered to each member of the Board of School Estimate a statement of the amount of money estimated to be necessary for Supplemental Capital Expenses dedicated to the construction of a new branch campus building in West Caldwell, NJ for the ensuing year; NOW THEREFORE BE IT

RESOLVED: That the Board of School Estimate of Essex County College does hereby fix and determine the amount of money set forth below in the following budget as necessary for Supplemental Capital Expenses dedicated to the Essex County College construction of a new branch campus building in West Caldwell, NJ for fiscal year 2021-2022;

| Item | Total Budget | State and Other Revenue | County Aid |
|---|--------------|----------------------------|--------------|
| Construction of a new branch campus building in West Caldwell, NJ | \$30,000,000 | \$20,000,000 | \$10,000,000 |

BE IT FURTHER RESOLVED: That amounts set, fixed and determined herein as Supplemental Capital Expenses dedicated to the Essex County College construction of a new campus building in the Township of West Caldwell for fiscal year 2021-2022 shall be exclusive of all other amounts fixed and determined by the Board of School Estimate of Essex County College; AND

BE IT FURTHER RESOLVED: That the secretary be authorized and directed to prepare three (3) certified copies of this resolution, as certificates required by law; one shall be served upon the Commission of Higher Education of the State of New Jersey, and one shall be delivered to the Board of Commissioners of the County of Essex.

Joseph N. DiVincenzo
County Executive

Leonard M. Luciano
Commissioner

Rufus I. Johnson
Commissioner

Marion A. Bolden
Trustee

Joseph S. Zarra
Trustee

Secretary to the
Board of School Estimate

Date: _____

Sworn to and subscribed before me this ____ day of October 2021

Christine Soto, Attorney at Law - Law License No. _____

Essex County College

West Essex Campus – New Academic Building

Located at 730 Bloomfield Avenue, West Caldwell, New Jersey 07006, the existing structure of the West Essex Campus consists of three connected buildings, totaling approximately 45,000 sq. ft. This building will be demolished to make way for a new West Essex Campus building.

In its efforts to provide quality service to the County, Essex County College has launched a project which will begin a new chapter for its official college branch, the West Essex Campus. The new two-story building project includes a working collaboration with the state, the county, the College and Netta Architects to provide architectural, engineering, and specialty services including survey geotechnical, environmental flood services, and coordination.

Two vital elements the new construction allows are the freedom to design flexible and expanded spaces and acquire new equipment and materials that reduce operating costs. The plans set forth are to build a state-of-the-art new modern facility that is two stories high and approximately 52,000 sq. ft. The building will accommodate 21st Century Smart-Technology Fitted Classrooms, General Science, Chemistry and Biology computer labs, Information Commons, Library, study rooms for small groups of students, a Multi-Purpose Room, and a Tutoring Center. A Welcome Center/One-Stop-Shop centralized area provides space for Enrollment Services, Financial Aid, Bursar's Office, and Counselors. Additionally, a Cafeteria/Student Lounge for student activities and events, Campus Store, Outdoor Terrace, Administrative Offices, Faculty Offices, and Adjunct Faculty Area will meet the space needs of students, faculty and staff.

Other important elements of the design are hands and touch-free restrooms, ADA compliant entrances and exits, inviting lobbies, common areas, energy-efficient lighting, state-of-the-art engineering and utility systems, such as HVAC, Fire Alarm, CCTV, keyless entry system technology, two elevators, facilities maintenance garage, renovated parking lots, and attractive landscaping.

The instructional environment includes interactivity between Smart Boards, all audio/visual components and projectors; and, a campus-wide wireless network. The new flexibility in the classrooms and technology serve the College's present and future academic needs. Moreover, the new building's impact on Essex County supports growth in the county's Western Region, expanding access to affordable higher education and offering gateways to new initiatives and programs.

FUNDING NEW WEST ESSEX CAMPUS ACADEMIC BUILDING



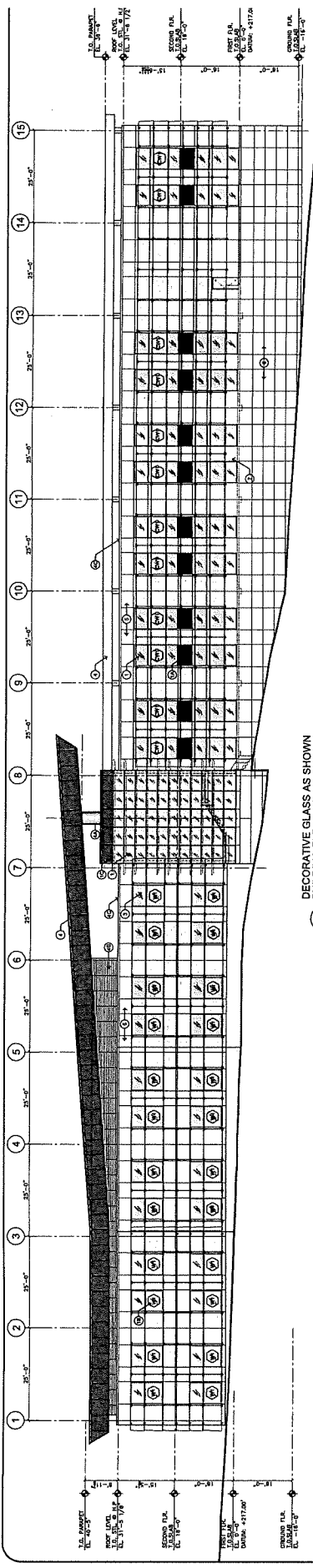
COUNTY OF ESSEX: \$ 10,000,000.00

STATE OF NEW JERSEY: \$10,000,000.00

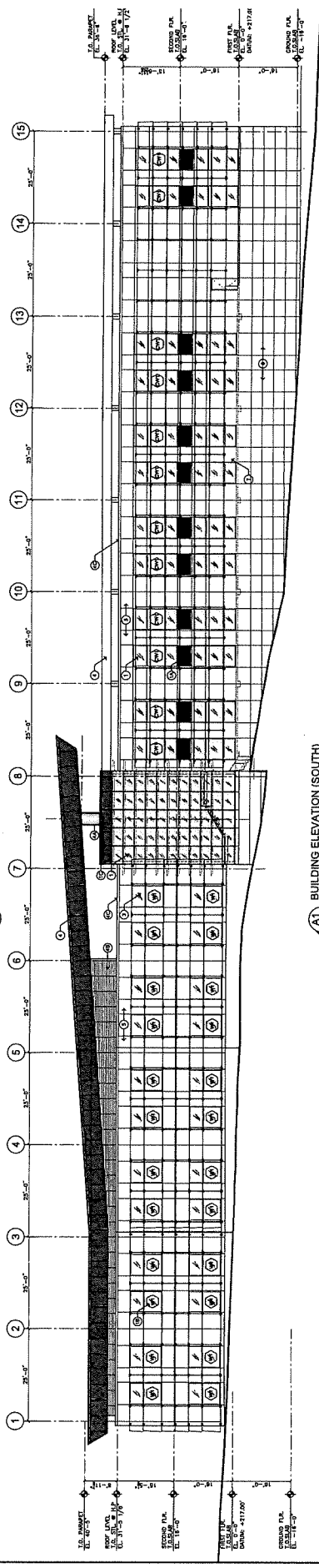
GO BOND for ECC: \$10,000,000.00

TOTAL COST: \$30,000,000.00



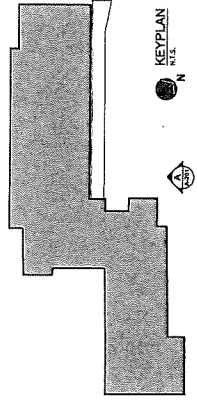


DECORATIVE GLASS AS SHOWN
BUILDING ELEVATION (SOUTH)
SCALE: 3/32" = 1'-0"



BUILDING ELEVATION (SOUTH)
SCALE: 3/32" = 1'-0"

- KEYNOTES THIS DRAWING**
- 1 INSULATED GLASS SYSTEM ALUMINUM FRAME
 - 2 INSULATED GLASS SYSTEM ALUMINUM FRAME
 - 3 PAINT CEMENT WALL SYSTEM
 - 4 WINDOW SYSTEM FOR ALUMINUM FRAME
 - 5 WINDOW SYSTEM FOR CEMENT WALL SYSTEM
 - 6 WINDOW SYSTEM FOR ALUMINUM FRAME
 - 7 WINDOW SYSTEM FOR CEMENT WALL SYSTEM
 - 8 WINDOW SYSTEM FOR ALUMINUM FRAME
 - 9 WINDOW SYSTEM FOR CEMENT WALL SYSTEM
 - 10 WINDOW SYSTEM FOR ALUMINUM FRAME
 - 11 WINDOW SYSTEM FOR CEMENT WALL SYSTEM
 - 12 WINDOW SYSTEM FOR ALUMINUM FRAME
 - 13 WINDOW SYSTEM FOR CEMENT WALL SYSTEM
 - 14 WINDOW SYSTEM FOR ALUMINUM FRAME
 - 15 WINDOW SYSTEM FOR CEMENT WALL SYSTEM

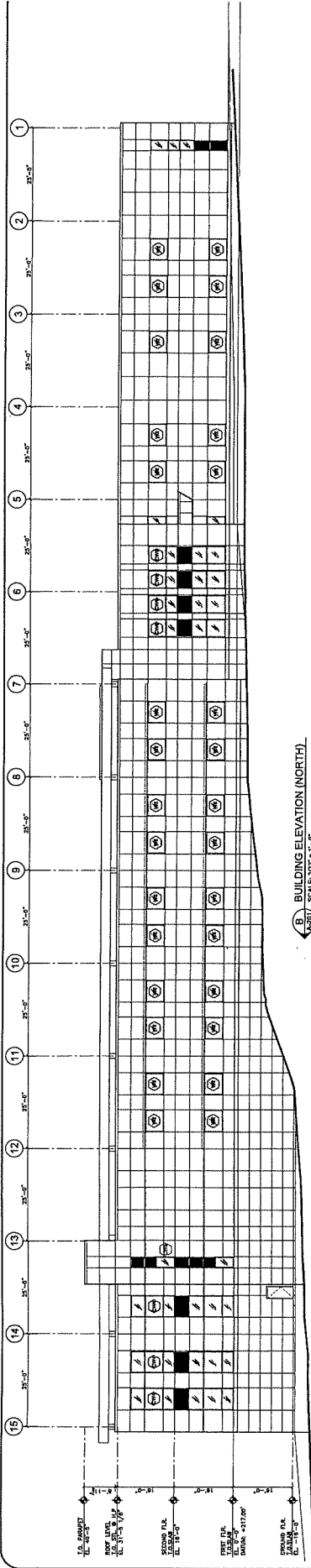


| | |
|--|---|
| <p>ESSEX COUNTY COLLEGE WEST ESSEX CAMPUS NEW BUILDING</p> <p>730 Hawthorne Avenue, West Essex, New Jersey 07093</p> <p>SHEET CONSOLE</p> <p>NETTAARCHITECTS 507 New York Ave. Suite 200 West Essex, NJ 07093 Tel: 973-267-8996 www.nettaarchitects.com</p> | <p>DATE: 04/26/2011</p> <p>BY: [Signature]</p> <p>DATE: [Signature]</p> <p>DESCRIPTION: [Signature]</p> <p>DATE: [Signature]</p> <p>DESCRIPTION: [Signature]</p> <p>DATE: [Signature]</p> <p>DESCRIPTION: [Signature]</p> |
| | <p>DATE: 04/26/2011</p> <p>BY: [Signature]</p> <p>DATE: [Signature]</p> <p>DESCRIPTION: [Signature]</p> <p>DATE: [Signature]</p> <p>DESCRIPTION: [Signature]</p> <p>DATE: [Signature]</p> <p>DESCRIPTION: [Signature]</p> |

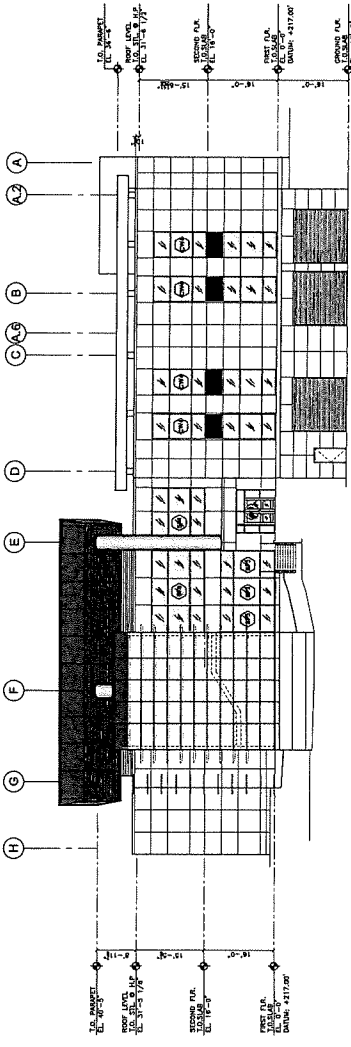
PROJECT: ESSEX COUNTY COLLEGE WEST ESSEX CAMPUS NEW BUILDING
SHEET CONSOLE
BUILDING ELEVATIONS

DATE: 04/26/2011
BY: [Signature]
DATE: [Signature]
DESCRIPTION: [Signature]
DATE: [Signature]
DESCRIPTION: [Signature]
DATE: [Signature]
DESCRIPTION: [Signature]

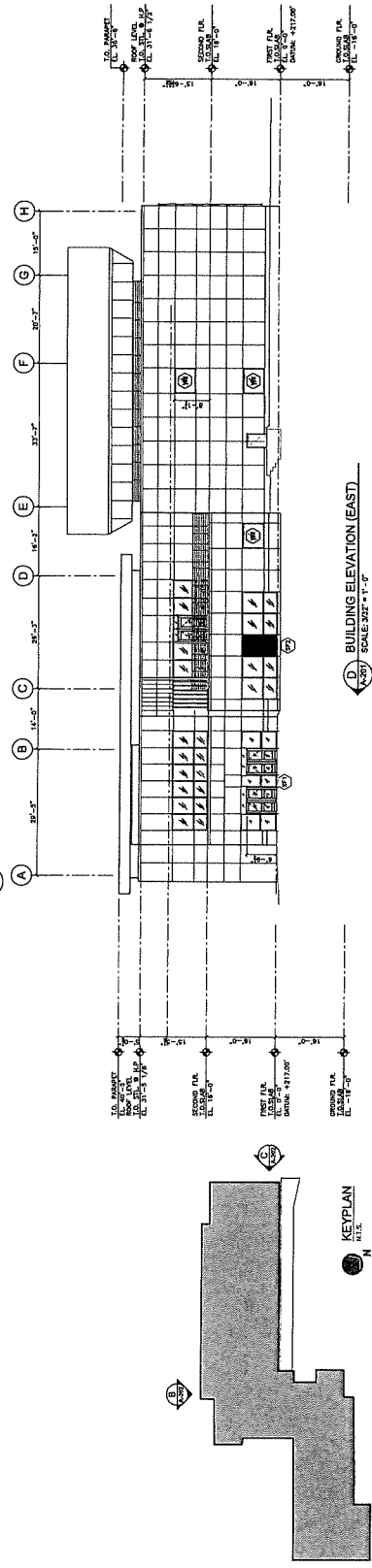
DATE: 04/26/2011
BY: [Signature]
DATE: [Signature]
DESCRIPTION: [Signature]
DATE: [Signature]
DESCRIPTION: [Signature]
DATE: [Signature]
DESCRIPTION: [Signature]



B BUILDING ELEVATION (NORTH)
SCALE: 3/32" = 1'-0"



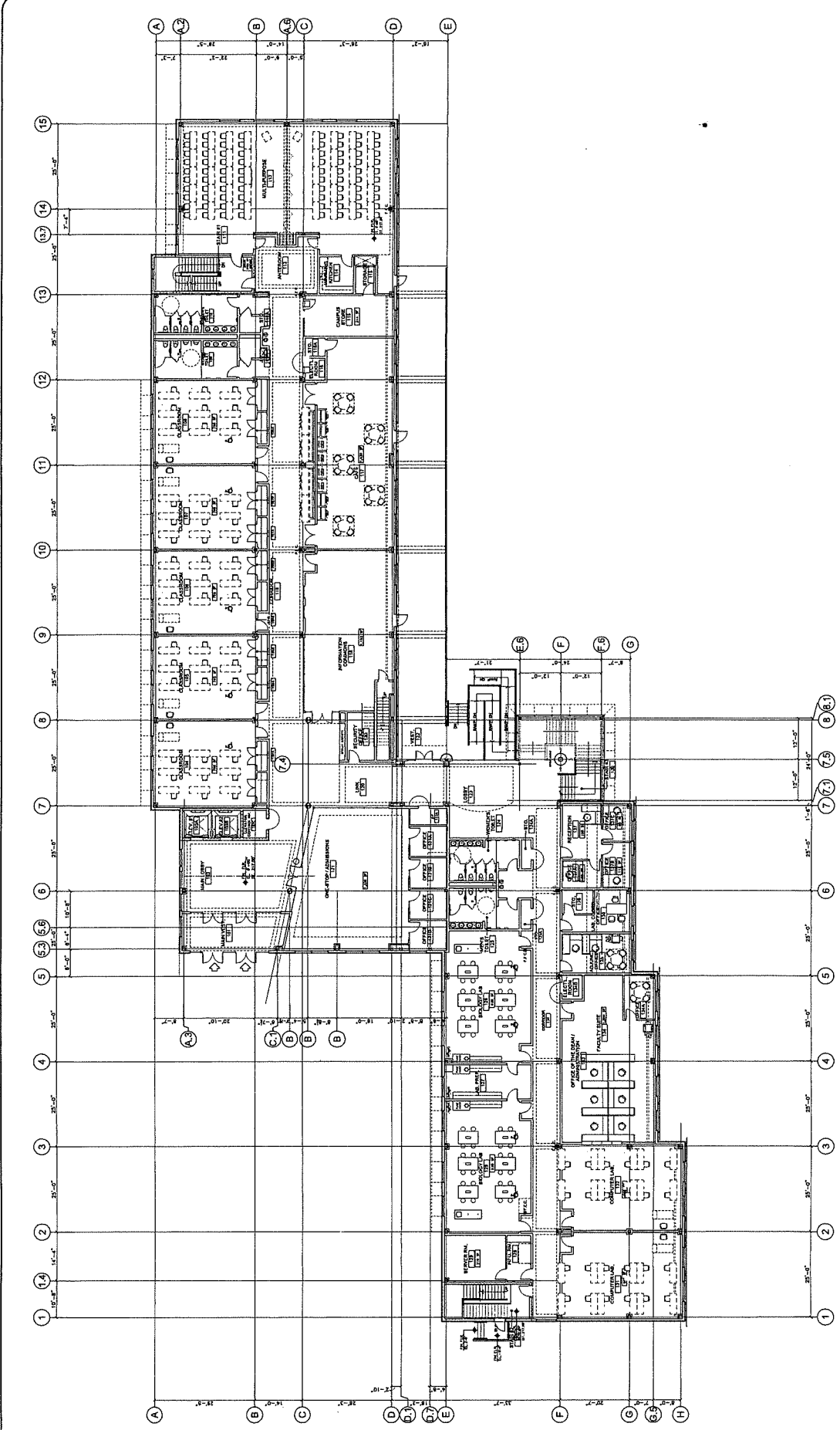
C BUILDING ELEVATION (WEST)
SCALE: 3/32" = 1'-0"



D BUILDING ELEVATION (EAST)
SCALE: 3/32" = 1'-0"

- KEYNOTES THIS DRAWING**
- 1 RELATING INTERIORS TO ALUMINUM
 - 2 RELATING SPANSET GLASS ON ALUMINUM
 - 3 RELATING SPANSET GLASS ON ALUMINUM
 - 4 RELATING SPANSET GLASS ON ALUMINUM
 - 5 RELATING SPANSET GLASS ON ALUMINUM
 - 6 RELATING SPANSET GLASS ON ALUMINUM
 - 7 RELATING SPANSET GLASS ON ALUMINUM
 - 8 RELATING SPANSET GLASS ON ALUMINUM
 - 9 RELATING SPANSET GLASS ON ALUMINUM
 - 10 RELATING SPANSET GLASS ON ALUMINUM
 - 11 RELATING SPANSET GLASS ON ALUMINUM
 - 12 RELATING SPANSET GLASS ON ALUMINUM
 - 13 RELATING SPANSET GLASS ON ALUMINUM
 - 14 RELATING SPANSET GLASS ON ALUMINUM
 - 15 RELATING SPANSET GLASS ON ALUMINUM
 - 16 RELATING SPANSET GLASS ON ALUMINUM
 - 17 RELATING SPANSET GLASS ON ALUMINUM
 - 18 RELATING SPANSET GLASS ON ALUMINUM
 - 19 RELATING SPANSET GLASS ON ALUMINUM
 - 20 RELATING SPANSET GLASS ON ALUMINUM
 - 21 RELATING SPANSET GLASS ON ALUMINUM
 - 22 RELATING SPANSET GLASS ON ALUMINUM
 - 23 RELATING SPANSET GLASS ON ALUMINUM
 - 24 RELATING SPANSET GLASS ON ALUMINUM
 - 25 RELATING SPANSET GLASS ON ALUMINUM
 - 26 RELATING SPANSET GLASS ON ALUMINUM
 - 27 RELATING SPANSET GLASS ON ALUMINUM
 - 28 RELATING SPANSET GLASS ON ALUMINUM
 - 29 RELATING SPANSET GLASS ON ALUMINUM
 - 30 RELATING SPANSET GLASS ON ALUMINUM
 - 31 RELATING SPANSET GLASS ON ALUMINUM
 - 32 RELATING SPANSET GLASS ON ALUMINUM
 - 33 RELATING SPANSET GLASS ON ALUMINUM
 - 34 RELATING SPANSET GLASS ON ALUMINUM
 - 35 RELATING SPANSET GLASS ON ALUMINUM
 - 36 RELATING SPANSET GLASS ON ALUMINUM
 - 37 RELATING SPANSET GLASS ON ALUMINUM
 - 38 RELATING SPANSET GLASS ON ALUMINUM
 - 39 RELATING SPANSET GLASS ON ALUMINUM
 - 40 RELATING SPANSET GLASS ON ALUMINUM
 - 41 RELATING SPANSET GLASS ON ALUMINUM
 - 42 RELATING SPANSET GLASS ON ALUMINUM
 - 43 RELATING SPANSET GLASS ON ALUMINUM
 - 44 RELATING SPANSET GLASS ON ALUMINUM
 - 45 RELATING SPANSET GLASS ON ALUMINUM
 - 46 RELATING SPANSET GLASS ON ALUMINUM
 - 47 RELATING SPANSET GLASS ON ALUMINUM
 - 48 RELATING SPANSET GLASS ON ALUMINUM
 - 49 RELATING SPANSET GLASS ON ALUMINUM
 - 50 RELATING SPANSET GLASS ON ALUMINUM
 - 51 RELATING SPANSET GLASS ON ALUMINUM
 - 52 RELATING SPANSET GLASS ON ALUMINUM
 - 53 RELATING SPANSET GLASS ON ALUMINUM
 - 54 RELATING SPANSET GLASS ON ALUMINUM
 - 55 RELATING SPANSET GLASS ON ALUMINUM
 - 56 RELATING SPANSET GLASS ON ALUMINUM
 - 57 RELATING SPANSET GLASS ON ALUMINUM
 - 58 RELATING SPANSET GLASS ON ALUMINUM
 - 59 RELATING SPANSET GLASS ON ALUMINUM
 - 60 RELATING SPANSET GLASS ON ALUMINUM
 - 61 RELATING SPANSET GLASS ON ALUMINUM
 - 62 RELATING SPANSET GLASS ON ALUMINUM
 - 63 RELATING SPANSET GLASS ON ALUMINUM
 - 64 RELATING SPANSET GLASS ON ALUMINUM
 - 65 RELATING SPANSET GLASS ON ALUMINUM
 - 66 RELATING SPANSET GLASS ON ALUMINUM
 - 67 RELATING SPANSET GLASS ON ALUMINUM
 - 68 RELATING SPANSET GLASS ON ALUMINUM
 - 69 RELATING SPANSET GLASS ON ALUMINUM
 - 70 RELATING SPANSET GLASS ON ALUMINUM
 - 71 RELATING SPANSET GLASS ON ALUMINUM
 - 72 RELATING SPANSET GLASS ON ALUMINUM
 - 73 RELATING SPANSET GLASS ON ALUMINUM
 - 74 RELATING SPANSET GLASS ON ALUMINUM
 - 75 RELATING SPANSET GLASS ON ALUMINUM
 - 76 RELATING SPANSET GLASS ON ALUMINUM
 - 77 RELATING SPANSET GLASS ON ALUMINUM
 - 78 RELATING SPANSET GLASS ON ALUMINUM
 - 79 RELATING SPANSET GLASS ON ALUMINUM
 - 80 RELATING SPANSET GLASS ON ALUMINUM
 - 81 RELATING SPANSET GLASS ON ALUMINUM
 - 82 RELATING SPANSET GLASS ON ALUMINUM
 - 83 RELATING SPANSET GLASS ON ALUMINUM
 - 84 RELATING SPANSET GLASS ON ALUMINUM
 - 85 RELATING SPANSET GLASS ON ALUMINUM
 - 86 RELATING SPANSET GLASS ON ALUMINUM
 - 87 RELATING SPANSET GLASS ON ALUMINUM
 - 88 RELATING SPANSET GLASS ON ALUMINUM
 - 89 RELATING SPANSET GLASS ON ALUMINUM
 - 90 RELATING SPANSET GLASS ON ALUMINUM
 - 91 RELATING SPANSET GLASS ON ALUMINUM
 - 92 RELATING SPANSET GLASS ON ALUMINUM
 - 93 RELATING SPANSET GLASS ON ALUMINUM
 - 94 RELATING SPANSET GLASS ON ALUMINUM
 - 95 RELATING SPANSET GLASS ON ALUMINUM
 - 96 RELATING SPANSET GLASS ON ALUMINUM
 - 97 RELATING SPANSET GLASS ON ALUMINUM
 - 98 RELATING SPANSET GLASS ON ALUMINUM
 - 99 RELATING SPANSET GLASS ON ALUMINUM
 - 100 RELATING SPANSET GLASS ON ALUMINUM

| <p>DATE: 03-20-2021 DRAWN BY: AS SHOWN CHECKED BY: GT DESIGNED BY: GT SHEET NO: 214-033 DRAWING NO: 01</p> | | <p>ESSEX COUNTY COLLEGE WEST LESSEX CAMPUS NEW BUILDING 750 Bluefield Avenue, West Colburn, New Jersey 07098</p> | <p>NETTAARCHITECTS 307 West 34th Street New York, NY 10018 Phone: 212-255-7700 Fax: 212-255-7700 CERTIFICATE OF AUTHORIZATION AC-031</p> | | | | | |
|---|------------|---|---|-----|------|-------------|---|------------|
| <p>REVISIONS</p> <table border="1"> <thead> <tr> <th>NO.</th> <th>DATE</th> <th>DESCRIPTION</th> </tr> </thead> <tbody> <tr> <td>1</td> <td>03-20-2021</td> <td>ISSUED FOR PERMITS</td> </tr> </tbody> </table> | | | | NO. | DATE | DESCRIPTION | 1 | 03-20-2021 |
| NO. | DATE | DESCRIPTION | | | | | | |
| 1 | 03-20-2021 | ISSUED FOR PERMITS | | | | | | |
| <p>KEYPLAN N</p> | | <p>ESSEX COUNTY COLLEGE WEST LESSEX CAMPUS NEW BUILDING 750 Bluefield Avenue, West Colburn, New Jersey 07098</p> | <p>NETTAARCHITECTS 307 West 34th Street New York, NY 10018 Phone: 212-255-7700 Fax: 212-255-7700 CERTIFICATE OF AUTHORIZATION AC-031</p> | | | | | |



A FIRST FLOOR FURNITURE PLAN
 SCALE: 1/8" = 1'-0"

| | | | | | |
|--|--|--|------------------|-----------|-------------|
| | | | DATE: 04.22.2021 | BY: DRG | AS SHOWN |
| | | | SUBMISSIONS | REVISIONS | |
| | | | DATE | BY | DESCRIPTION |
| | | | JOB NO. 2011428 | SHEET: 01 | DATE |
| | | | DRAWING NO. | DATE | BY |

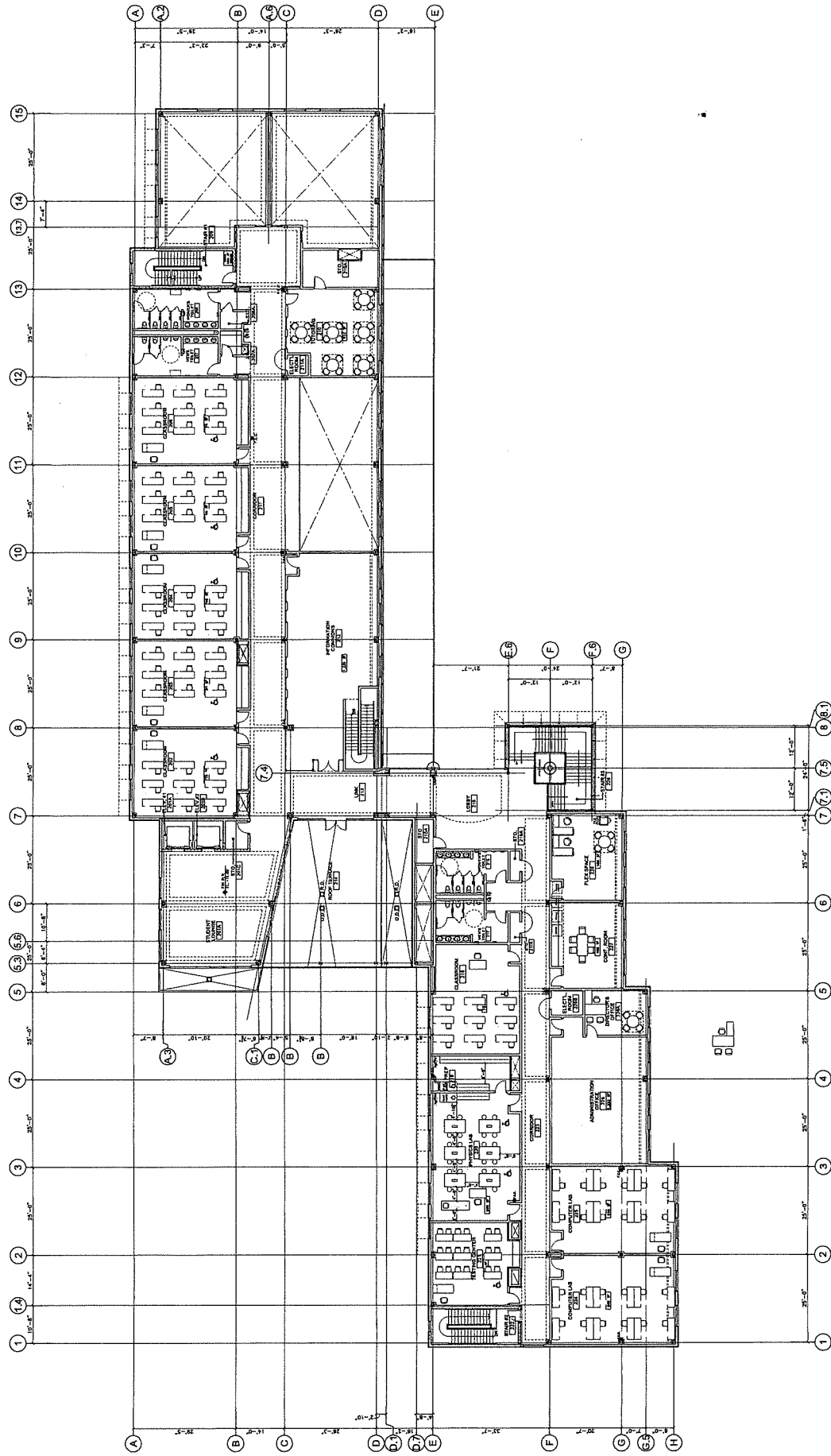
PROJECT: ESSEX COUNTY COLLEGE
WEST ESSEX CAMPUS
NEW BUILDING
 320 Rockwood Avenue, West Essex, New Jersey 07089

SHEET CONTENTS:
FIRST FLOOR FURNITURE PLAN

NETTARCHITECTS
 251 River Street, Suite 1000
 Rockwood Avenue, West Essex, NJ 07089
 908.486.1000
 WWW.NETTARCHITECTS.COM
 REGISTERED ARCHITECTS
 STATE OF NEW JERSEY
 CERTIFICATE OF AUTHORIZATION #00021086

ARCHITECTS:
 MICHAEL J. NETT, ARCHITECT
 NJ License # 36114
 FRANCESCO J. MAGNOLIO, ARCHITECT
 NJ License # 36115
 MARK E. BODD, ARCHITECT
 NJ License # 36116
 JOYCE A. NETT, ARCHITECT
 NJ License # 36117

A-801



A SECOND FLOOR FURNITURE PLAN
 SCALE: 3/32" = 1'-0"
 1/8" = 1'-0"

| SUBMISSIONS | | REVISIONS | |
|---|------------------------------|-----------|---------|
| DATE | DESCRIPTION | BY | CHK/DTE |
| 04-22-2021 <td>AS SHOWN <td></td> <td></td> </td> | AS SHOWN <td></td> <td></td> | | |
| | CHANGED <td></td> <td></td> | | |
| | CRK/DT <td></td> <td></td> | | |
| | REV <td></td> <td></td> | | |
| | JOB NO. <td></td> <td></td> | | |
| | SHEET <td></td> <td></td> | | |
| | DRWP NO. <td></td> <td></td> | | |

A-802

PROJECT:
 ESSEX COUNTY COLLEGE
 WEST ESSEX CAMPUS
 NEW BUILDING
 220 Woodland Avenue, West Concord, New Jersey 07008

SHEET CONTENTS:
 SECOND FLOOR FURNITURE PLAN



REGISTERED ARCHITECTS
 IN THE STATE OF NEW JERSEY
 FRANCESCO L. MELIOTTI, P.A.
 400 Madison Ave., 18th Floor
 New York, NY 10017
 Tel: 212.692.1000
 Fax: 212.692.1001
 www.fmelio.com

These drawings are the property of the Architect. They are to be used only for the project and site specified hereon. They are not to be reproduced, stored in a retrieval system, or transmitted in any form or by any means, electronic, mechanical, photocopying, recording, or by any information storage and retrieval system, without the prior written consent of the Architect.

Exhibit A



BOARD OF TRUSTEES REQUEST FOR BOARD ACTION

| | |
|------------------|---|
| Subject: | Finance: Acceptance of Funds from the County of Essex |
| Contact: | Dr. Augustine A. Boakye, Interim President |
| Meeting Date: | September 21, 2021 |
| Agenda Item No.: | 3-2.1/9-2021 |

WHEREAS, N.J.S.A. 18A:64A--57 permits the Board of Trustees to accept funds from any government or governmental agency to use for its purposes.

WHEREAS, a request was made to the County of Essex for additional capital funds needed for the construction of a new campus building in West Caldwell; and

WHEREAS, it was deemed necessary to demolish the building the College occupied and replace it with a new state-of-the-art, 51,700 square foot facility; and

WHEREAS, the new construction allows for the design of flexible and expanded spaces and the ability to acquire new equipment and materials that reduce operating costs; and

WHEREAS, the new West Essex campus will provide the facilities that meet the needs of students preparing themselves for the 21st century workforce, and empower faculty and staff in delivering high quality academic programming; and

WHEREAS, the new West Essex campus will provide the infrastructure and flexibility to support changes in pedagogy, and enable Essex County College to remain competitive with neighboring institutions of higher education; and

WHEREAS, the new West Essex campus will enable the College to expand its programs for degree seeking students and offerings for hands-on, skills-based workforce development programs designed to meet the needs of today's labor market and better serve the West Essex community; and

WHEREAS, the new building's impact on Essex County will support growth in the county's western region that expands access to affordable higher education; and

WHEREAS, this request for additional capital funds is needed to meet the College's capital budget for the purpose of constructing a new branch campus,

NOW, THEREFORE, BE IT RESOLVED by the Essex County College Board of Trustees as follows:

1. The Board of Trustees of Essex County College accepts funding from the County of Essex in the amount of \$10,000,000 for capital expenses incurred by Essex County College for the construction of a new branch campus building in West Caldwell, New Jersey.

| | |
|---|---|
| EXECUTIVE RESPONSIBLE FOR RECOMMENDATION Dr. Augustine Boakye, Interim President | FINAL DISPOSITION Approved by Board of Trustees |
| BOARD APPROVAL DATE September 21, 2021 | |

Exhibit B

**BOARD OF TRUSTEES
REQUEST FOR BOARD ACTION**

| | |
|------------------|--|
| Subject: | Resolution to Provide Statement and to Fix Date for Essex County College Board of School Estimate Public Hearing |
| Contact: | Dr. Augustine Boakye, Interim President |
| Meeting Date: | September 21, 2021 |
| Agenda Item No.: | 3-2.2/9-2021 |

WHEREAS: The Board of Trustees of Essex County College has determined that it is necessary to raise additional capital funds for the purpose of the construction of a new campus building in West Caldwell; and

WHEREAS: N.J.S.A. 18A:64A-19 requires Essex County College to prepare and deliver to each member of the Board of School Estimate a statement with an estimated cost, the amount of money estimated by the Board of Trustees needed to be raised and the source of funding for the construction of a new campus building in West Caldwell.

NOW THEREFORE, BE IT RESOLVED by the Essex County College Board of Trustees as follows:

1. The President of Essex County College shall ensure that a copy of the statement with an estimated cost, the amount of money estimated by the Board of Trustees needed to be raised and the source of funding for the construction of a new campus building in West Caldwell be delivered to each member of the Board of School Estimate as soon as practicable; and
2. The Board of School Estimate shall hold a virtual public hearing with respect to the statement for additional funds for the construction for a new campus building in West Caldwell on October 14, 2021 via Zoom in accordance with the Open Public Meetings Act, P.L. 2020 c. 11, the Governor of New Jersey's Executive Order 244, and N.J.A.C. 5:39-1 Emergency Regulations: Remote Public Meetings Held During a Declared Emergency) regarding COVID 19 Emergency Actions at 1:00 p.m.

| | |
|---|---|
| EXECUTIVE RESPONSIBLE FOR RECOMMENDATION Dr. Augustine Boakye, Interim President | FINAL DISPOSITION Approved by Board of Trustees |
| BOARD APPROVAL DATE September 21, 2021 | |

Congleton, Jonell

From: Ana Santos <asantos@admin.essexcountynj.org>
Sent: Friday, September 24, 2021 5:01 PM
To: Congleton, Jonell
Subject: RE: Confirmation

CAUTION: This email originated outside of the organization. Do not click links or open attachments unless you recognize the sender and know the content is safe.

Good afternoon Jonell,

Something came up for the County Executive and he is not available on October 14th. Can we move to another day?

ana

From: Congleton, Jonell <jcongleton@essex.edu>
Sent: Wednesday, September 22, 2021 1:05 PM
To: Ana Santos <asantos@admin.essexcountynj.org>
Subject: Confirmation

Good Afternoon Ana,

Please accept this message to confirm the Board of School Estimate meeting. The Commissioners and Trustees assigned to the Board have agreed to meet, virtually, on Thursday, October 14th at 1:00 p.m.

I will bring the meeting materials to your office as soon as they are prepared.

Thank you for securing the date and time. 😊



Jonelle

Jonell Congleton
Liaison to the President/Board of Trustees
Office of the President
Essex County College
303 University Avenue
Newark NJ, 07102-1719
Tel: 973 877 3068
Fax: 973 877 4465
www.essex.edu

A candle loses nothing by lighting another candle - James Keller

Congleton, Jonell

From: Ana Santos <asantos@admin.essexcountynj.org>
Sent: Tuesday, September 28, 2021 3:39 PM
To: Congleton, Jonell
Subject: RE: Confirming Date and Time of the Board of School Estimate Meeting

CAUTION: This email originated outside of the organization. Do not click links or open attachments unless you recognize the sender and know the content is safe.

Confirmed.

Regards
Ana Santos
Assistant to Joseph N. DiVincenzo
Essex County Executive
973-621-4400

From: Congleton, Jonell <jcongleton@essex.edu>
Sent: Tuesday, September 28, 2021 3:17 PM
To: Ana Santos <asantos@admin.essexcountynj.org>; Debra Marvel <dmarvel@commissioners.essexcountynj.org>
Subject: Confirming Date and Time of the Board of School Estimate Meeting

Good Afternoon,

Please accept this as confirmation that the Essex County College Board of School Estimate will meet, virtually, on Friday, October 15th at 9:30 am. All members of the Board have agreed to the meeting date and time.

I will send meeting materials, Zoom logins, etc. as soon as they are available.

Thank you very much for your assistance in scheduling the meeting. I will send notice to the newspapers right away.



Jonello

Jonell Congleton
Liaison to the President/Board of Trustees
Office of the President
Essex County College
303 University Avenue
Newark NJ, 07102-1719
Tel: 973 877 3068
Fax: 973 877 4465
www.essex.edu
A candle loses nothing by lighting another candle - James Keller

Exhibit C

LEGAL NOTICE

A virtual Public Meeting has been scheduled on Friday, October 15, 2021 at 9:30 A.M. at which time and place the Board of School Estimate of Essex County College will meet for the purpose of adopting and duly certifying the request for additional capital funds in the amount of \$10,000,000 needed for the construction of a new campus building in West Caldwell, New Jersey, in accordance with N.J.S.A. 18A-64A-57j et seq.

A copy of the Board of School Estimate meeting packet is available for review on the College website and may be accessed via the College's main page www.essex.edu. The meeting packet, including the budget for the project, shall be on file and available for viewing at Room 6116, in the A. Zachary Yamba Building, 303 University Avenue, Newark, New Jersey during business hours, Monday through Friday.

In accordance with the Open Public Meetings Act (P.L. 2020 c. 11), and the Governor of New Jersey's Executive Order 244, and N.J.A.C. 5:39-1 Emergency Regulations: Remote Public Meetings held During a Declared Emergency) regarding COVID 19 Emergency Actions, the Public is invited to attend the meeting by:

Accessing the link: <https://essex-edu.zoom.us/j/95517947786>

Or Telephone: Dial +1 646 558 8656 and enter Webinar ID: 955 1794 7786

<https://essex-edu.zoom.us/j/aeFTMlphIo>

Taxpayers and other interested persons may offer comments on the request for additional capital funds by emailing publiccomments@essex.edu before 5:00 P.M. on Wednesday October 13, 2021. Comments received by email will be read into the record during the meeting. Please include your name and contact information.

George Peterson, CFO
10/2/21 \$96.10

Public Meetings

LEGAL NOTICE A virtual Public Meeting has been scheduled on Friday, October 15, 2021 at 9:30 A.M. at which time and place the Board of School Estimate of Essex County College will meet for the purpose of adopting and duly certifying the request for additional capital funds in the amount of \$10,000,000 needed for the construction of a new campus building in West Caldwell, New Jersey, in accordance with N.J.S.A. 18A-64A-57j et seq. A copy of the Board of School Estimate meeting packet is available for review on the College website and may be accessed via the College's main page www.essex.edu. The meeting packet, including the budget for the project, shall be on file and available for viewing at Room 6116, in the A. Zachary Yamba Building, 303 University Avenue, Newark, New Jersey during business hours, Monday through Friday. In accordance with the Open Public Meetings Act (P.L. 2020 c. 11), and the Governor of New Jersey's Executive Order 244, and N.J.A.C. 5:39-1 Emergency Regulations: Remote Public Meetings held During a Declared Emergency) regarding COVID 19 Emergency Actions, the Public is invited to attend the meeting by: Accessing the link: <https://essex-edu.zoom.us/j/95517947786> Or Telephone: Dial +1 646 558 8656 and enter Webinar ID: 955 1794 7786 <https://essex-edu.zoom.us/j/aeFTMlphIo> Taxpayers and other interested persons may offer comments on the request for additional capital funds by emailing publiccomments@essex.edu before 5:00 P.M. on Wednesday, October 13, 2021. Comments received by email will be read into the record during the meeting. Please include your name and contact information. George Peterson, CFO 10/2/21 \$96.10

Notices and Announcements - Legal Notice

From: Congleton, Jonell

Sent: Wednesday, September 29, 2021 9:24 AM

To: 'legalads@starledger.com' <legalads@starledger.com>; 'legals@recordernewspapers.com' <legals@recordernewspapers.com>

Subject: Request to Post Ad

Good Afternoon,

Please post the notice attached/embedded below in your respective newspapers.

LEGAL NOTICE

A virtual Public Meeting has been scheduled on Friday, October 15, 2021 at 9:30 A.M. at which time and place the Board of School Estimate of Essex County College will meet for the purpose of adopting and duly certifying the request for additional capital funds in the amount of \$10,000,000 needed for the construction of a new campus building in West Caldwell, New Jersey, in accordance with N.J.S.A. 18A-64A-57j et seq.

A copy of the Board of School Estimate meeting packet is available for review on the College website and may be accessed via the College's main page www.essex.edu. The meeting packet, including the budget for the project, shall be on file and available for viewing at Room 6116, in the A. Zachary Yamba Building, 303 University Avenue, Newark, New Jersey during business hours, Monday through Friday.

In accordance with the Open Public Meetings Act (P.L. 2020 c. 11, and the Governor of New Jersey's Executive Order 244, and N.J.A.C. 5:39-1 Emergency Regulations: Remote Public Meetings held During a Declared Emergency) regarding COVID 19 Emergency Actions, the Public is invited to attend the meeting by:

Accessing the link: <https://essex-edu.zoom.us/j/95517947786>

Or Telephone: Dial +1 646 558 8656 and enter Webinar ID: 955 1794 7786

International numbers available: <https://essex-edu.zoom.us/j/95517947786>

Taxpayers and other interested persons may offer comments on the request for additional capital funds by emailing publiccomments@essex.edu before 5:00 P.M. on Wednesday, October 13, 2021. Comments received by email will be read into the record during the meeting. Please include your name and contact information.

George Peterson, CFO

Billing for this notice may be mailed to my attention as indicated below.

Thank you,



Jonelle

Jonell Congleton
Liaison to the President/Board of Trustees
Office of the President
Essex County College
303 University Avenue
Newark NJ, 07102-1719
Tel: (973) 877 3068
Fax: (973) 877 4465
www.essex.edu

A candle loses nothing by lighting another candle - James Keller