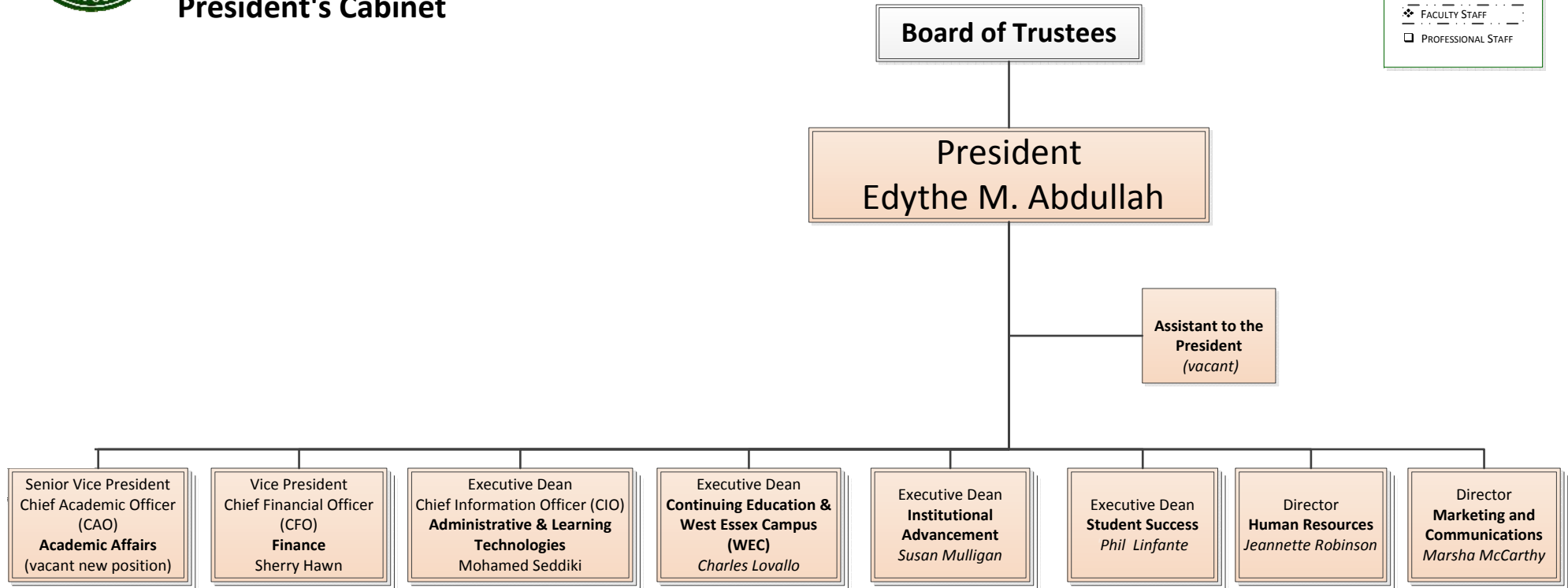
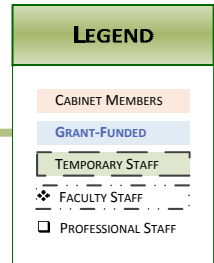




Essex County College 2011-2012 Organization Chart

President's Cabinet



• Liberal Arts & Sciences

- Biology & Chemistry
- English for Speakers of Other Languages (ESOL)
- Humanities
- Mathematics & Physics
- Social Sciences
- ❖ Africana Institute
- ❖ Urban Issues Institute

• Workforce

- Academic Foundations
- Business
- Engineering Technologies & Computer Sciences
- Nursing & Allied Health

- Assistant Comptroller
- Accounting
- Accounts Payable
- Bursar
- Payroll & Financial Operations

- Information Technology
- IT Support and Instruction
- Library and Information Commons
- Media Production and Technology Center

- Adult Learning Center
- College YES
- Community & Extension Programs
- Corporate & Business Training
- Educational Opportunity Fund
- High School Initiative
- On-Campus Continuing Education
- Police Academy
- Special Programs
- Training, Inc.
- West Essex Campus (WEC)
- WISE Women's Center
- Workforce Development

- Alumni Affairs
- Development
- Grants
- Planning & Institutional Research

- Athletics
- Gateway to College
- Enrollment Services
- Evening & Weekend Services
- Financial Aid
- Recruitment and Retention
- Student Life & Activities
- Student Development Center (Career, Transfer, and Counseling Services)



Essex County College 2011-2012 Organization Chart

Administrative Staff

