

EMBARGOED UNTIL FEB. 12, 2020



2019 #RealCollege Survey Report

Institution Report

January 2020



HOPE4COLLEGE.COM

EMBARGOED UNTIL FEB. 12, 2020

2019 #REALCOLLEGE SURVEY RESULTS

INSTITUTION REPORT FOR ESSEX COUNTY COLLEGE

**Prepared by
The Hope Center for College, Community, and Justice
at Temple University**

January 2020

OVERVIEW

* Invitations to complete the questionnaire were sent by email to approximately 8,500 students from Essex County College and 251 students participated. Thus, the estimated response rate is 2.9%.

*** Overall Basic Needs Insecurity Rates:**

- 59% of respondents experienced food insecurity in the prior 30 days
- 61% of respondents experienced housing insecurity in the previous year
- 16% of respondents experienced homelessness in the previous year

* 75% of students at Essex County College experienced at least one of these forms of basic needs insecurity in the past year.

For more information on the research methodology and survey participants, please refer to the online appendices for the 2019 National #RealCollege Survey report (available at www.hope4college.com).

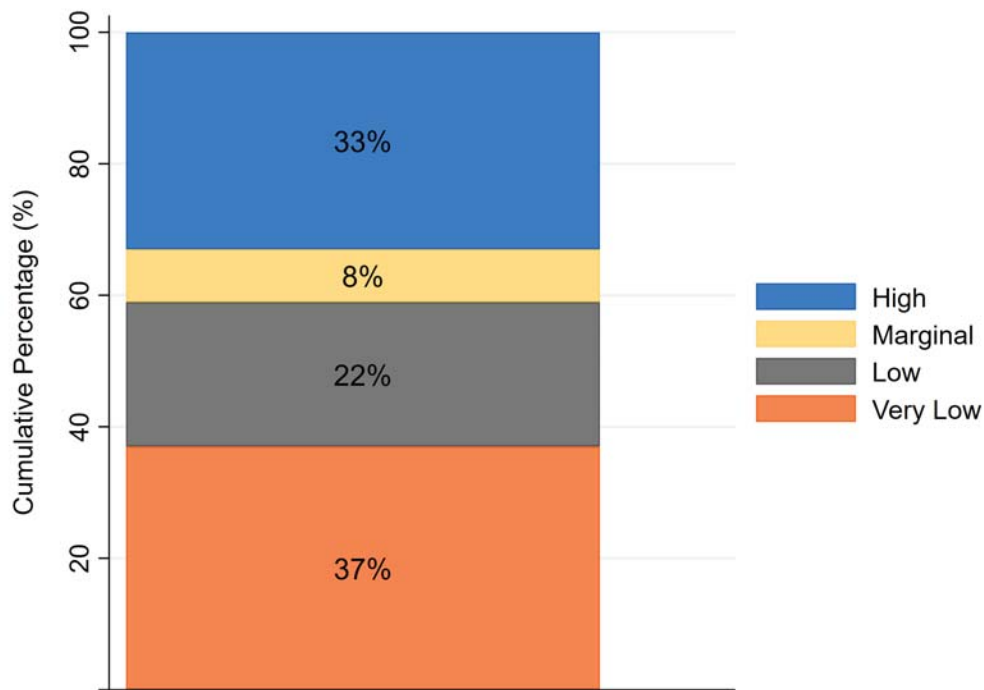
PREVALENCE OF BASIC NEEDS INSECURITY

Food Insecurity

Food insecurity is the limited or uncertain availability of nutritionally adequate and safe food, or the ability to acquire such food in a socially acceptable manner. The most extreme form is often accompanied with physiological sensations of hunger. We assessed food security among students using the U.S. Department of Agriculture's (USDA) 18-item set of questions.

During the 30 days preceding the survey, approximately 59% of survey respondents at Essex County College experienced low or very low levels of food security (Figure 1). Moreover, 54% of survey respondents cannot afford to eat balanced meals and 55% worry about running out of food before they have money to buy more.

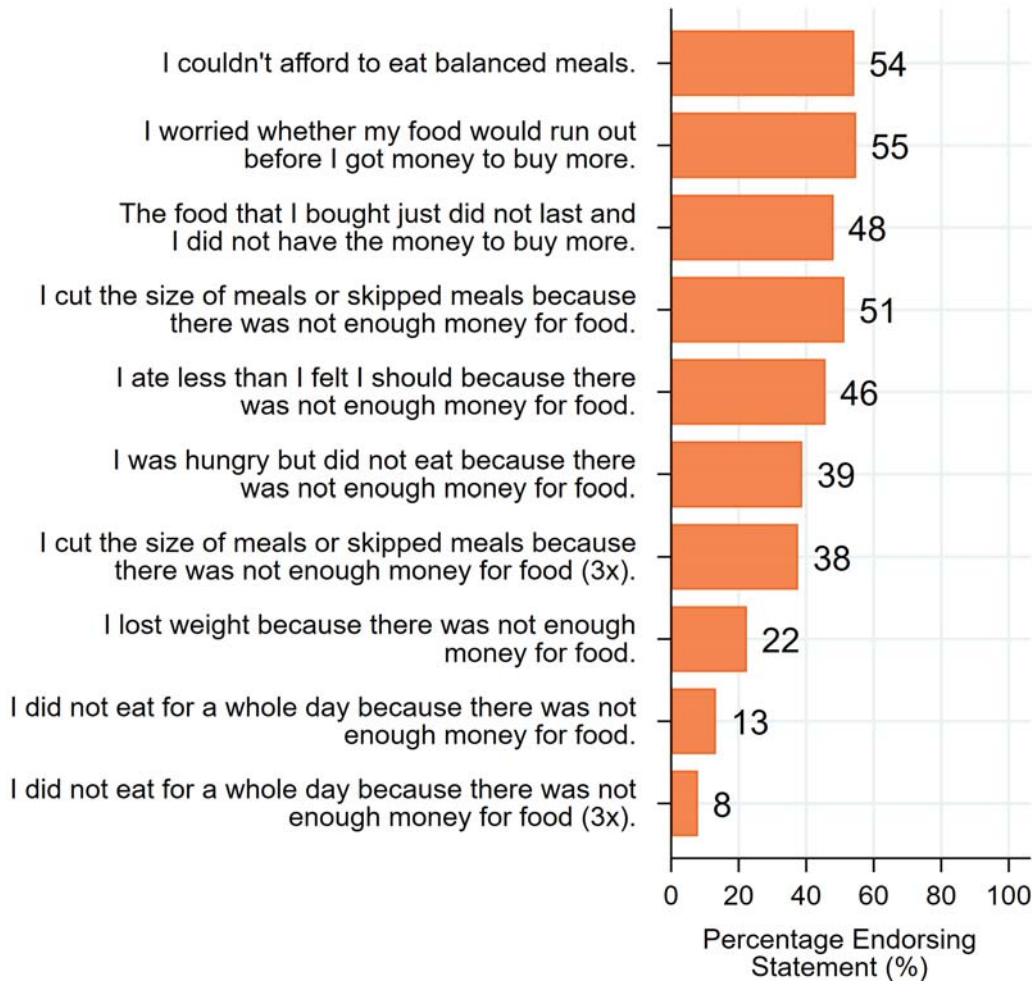
Figure 1. Food Security Among Survey Respondents at Essex County College



Source: 2019 #RealCollege Survey

Notes: According to the USDA, students at either low or very low food security are termed food insecure. For the full list of questions used to measure food security, see our full report available at www.hope4college.com. Cumulative percentage may not add up to 100 due to rounding error.

Figure 2. Food Insecurity Among Survey Respondents at Essex County College



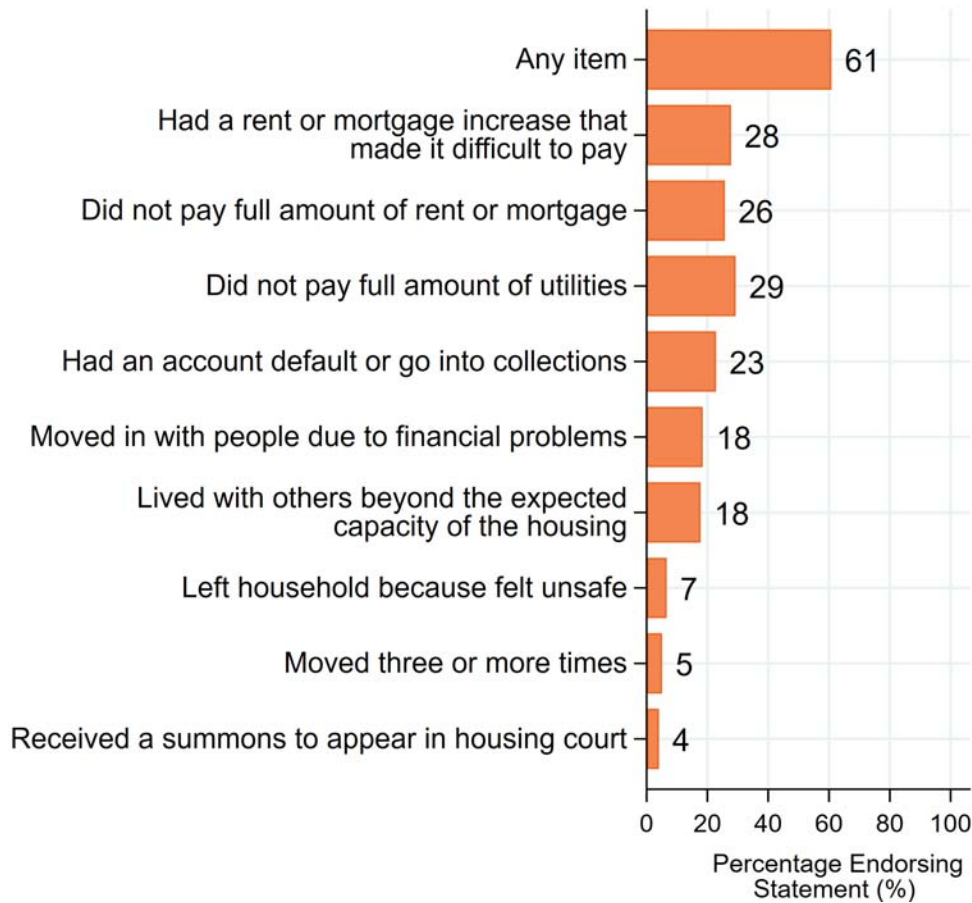
Source: 2019 #RealCollege Survey

Housing Insecurity

Housing insecurity includes a broad set of challenges such as the inability to pay rent or utilities or the need to move frequently. All of these challenges affect students, and results suggest they are more likely to suffer some form of housing insecurity than to have all their needs met during college. Housing insecurity among students was assessed with a nine-item set of questions developed by the Hope Center. Students are classified as housing insecure if they answered affirmatively to experiencing at least one of those items in the previous year.

How prevalent is housing insecurity at Essex County College? As displayed below, 61% of survey respondents are housing insecure (Figure 3).

Figure 3. Housing Insecurity Among Survey Respondents at Essex County College



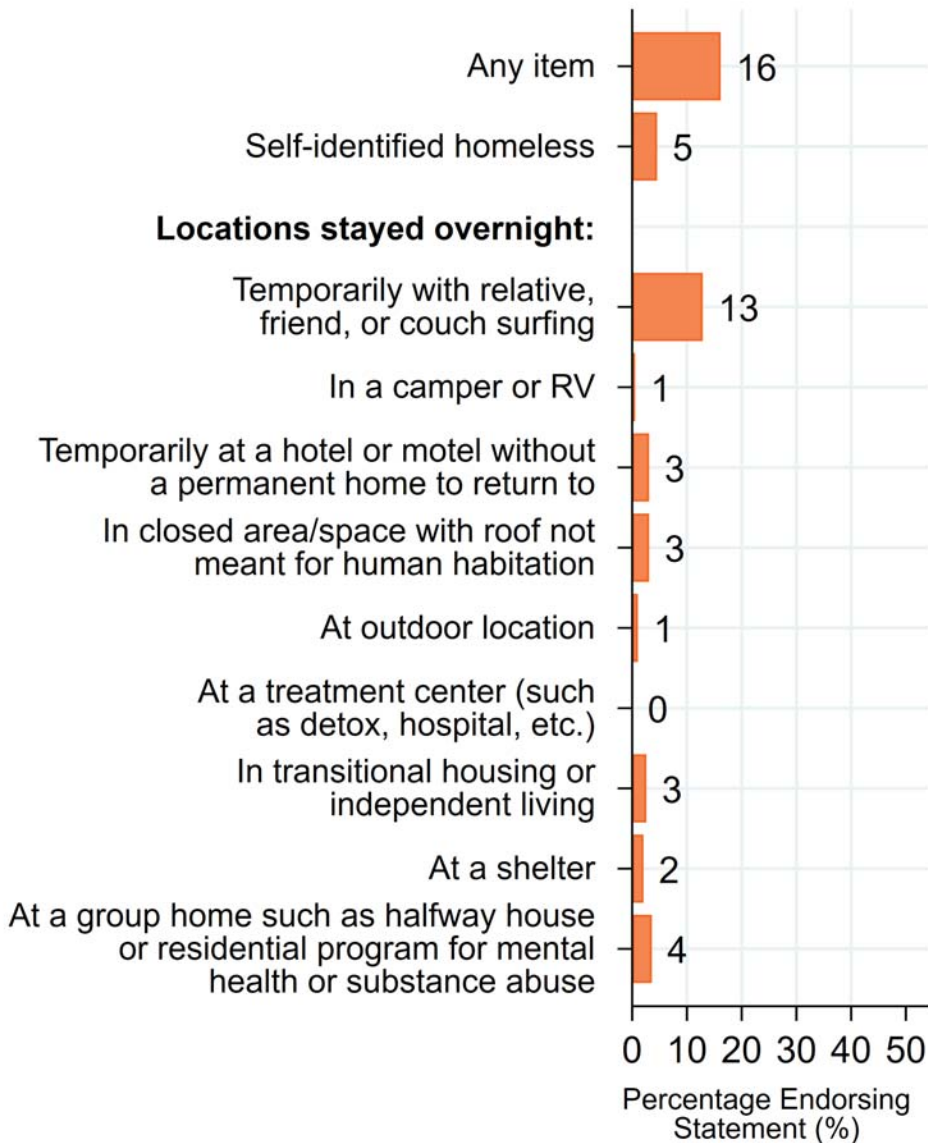
Source: 2019 #RealCollege Survey

Homelessness

Homelessness means that a person does not have a stable place to live. Students were identified as homeless if they responded affirmatively to a question asking if they had been homeless or they experienced living conditions that are considered signs of homelessness in the previous year. Homelessness among students was assessed with a tool developed by California State University researchers.

How prevalent is homelessness at Essex County College? As displayed below, 16% of survey respondents experience homelessness (Figure 4).

Figure 4. Homelessness Among Survey Respondents at Essex County College

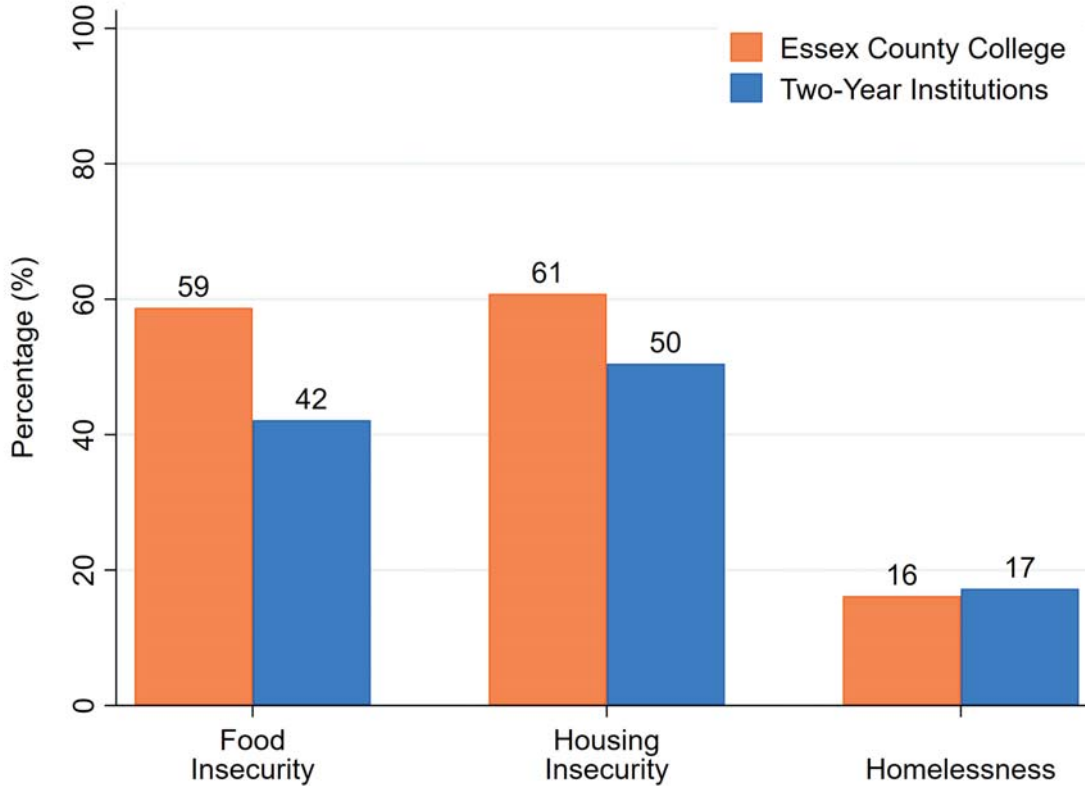


Source: 2019 #RealCollege Survey

COMPARISON TO SURVEY RESPONDENTS ATTENDING TWO-YEAR INSTITUTIONS

In comparison to the rates for all survey respondents at two-year institutions nationwide in 2019, Essex County College has a higher rate of food insecurity, a higher rate of housing insecurity, and a lower rate of homelessness (Figure 5).

Figure 5. Comparison of Basic Needs Insecurity Rates

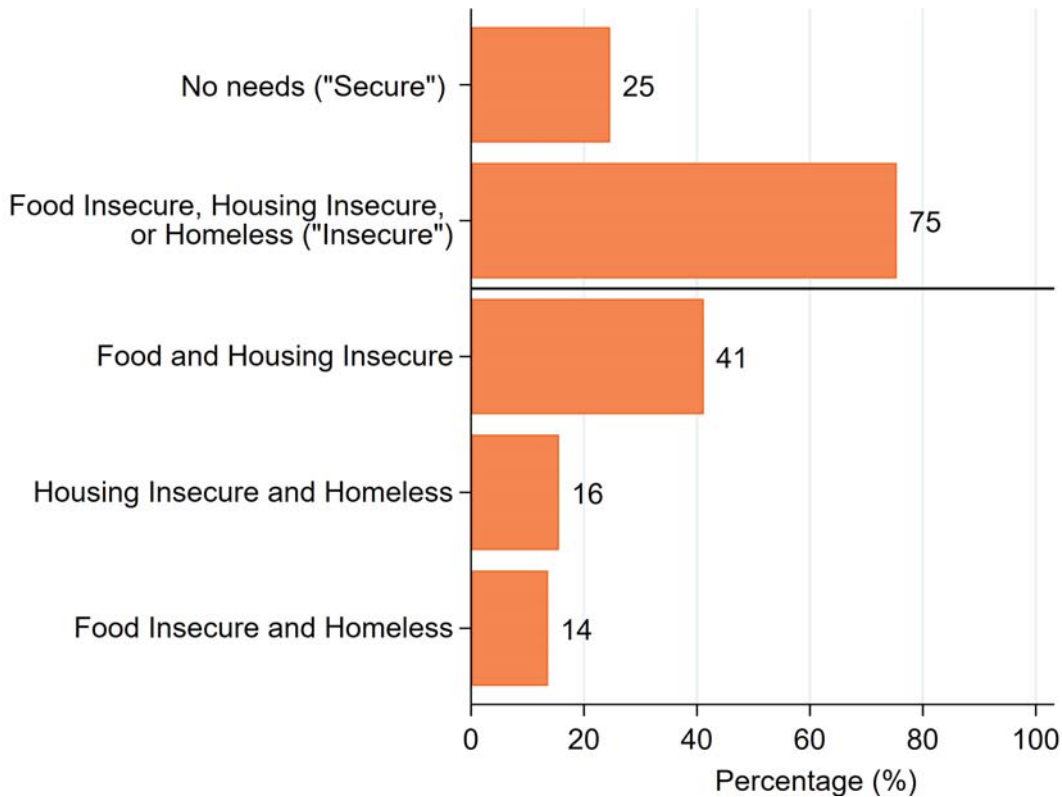


Source: 2019 #RealCollege Survey

OVERLAPPING CHALLENGES

Food insecurity, housing insecurity, and homelessness are overlapping concerns, with 75% of students at Essex County College experiencing at least one of these forms of basic needs insecurity in the past year (Figure 6).

Figure 6. Intersections of Food Insecurity, Housing Insecurity, and Homelessness Among Survey Respondents at Essex County College



Source: 2019 #RealCollege Survey

CONCLUSION

The #RealCollege survey affirms what has been evident to college administrators, faculty, staff, and students for years: basic needs insecurity is a condition challenging many undergraduates pursuing credentials. The scope of the problem described here is substantial and should be cause for a systemic response.

ABOUT US

The Hope Center for College, Community, and Justice is redefining what it means to be a student-ready college with a national movement centering #realcollege students' basic needs. In order to advance the necessary systemic changes to support those needs, our work includes four pillars: action research, engagement and communication, advocacy, and sustainability. For more information, visit www.hope4college.com.

CONTACT INFORMATION

If you have questions about this report, please contact the Hope Center Research Team at hopesrvy@temple.edu.